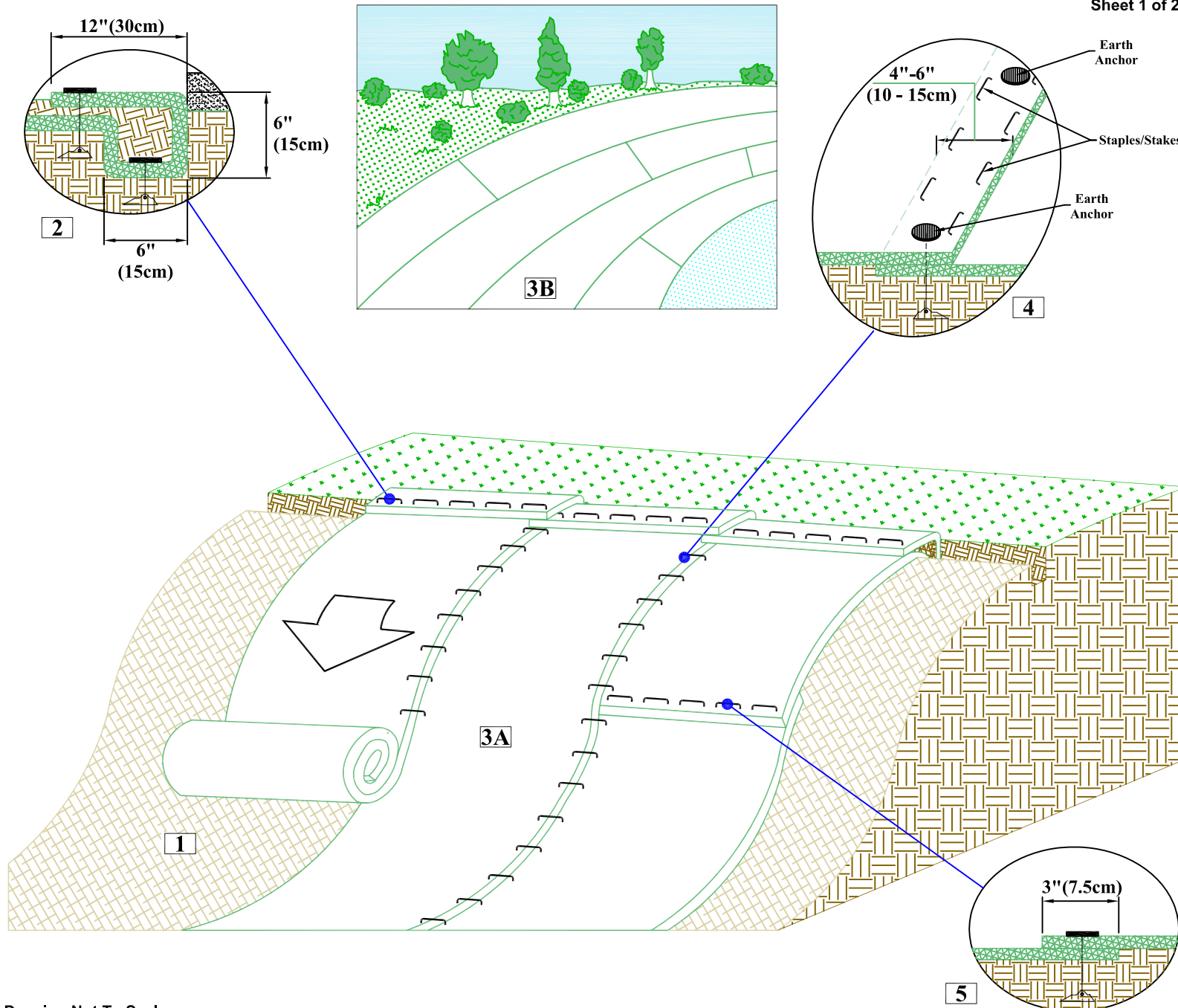


SLOPE INSTALLATION EARTH ANCHOR (EA) DETAIL

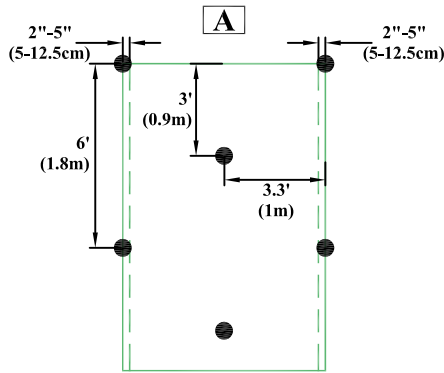


1. Prepare soil before installing high-performance turf reinforcement mats (HP-TRMs), including any necessary application of lime, fertilizer, and seed.
2. Begin at the top of the slope by anchoring the HP-TRMs in a 6" (15 cm) deep x 6" (15cm) wide trench with approximately 12" (30 cm) of HP-TRMs extended beyond the up-slope portion of the trench. Anchor the HP-TRMs with a row of staples and anchors approximately 12" (30 cm) apart in the bottom of the trench. Backfill and compact the trench after stapling. Apply seed to compacted soil and fold remaining 12" (30 cm) portion of HP-TRMs back over seed and compacted soil. Secure HP-TRMs over compacted soil with a row of staples/stakes spaced approximately 12" (30 cm) apart across the width of the HP-TRMs.
3. Roll the HP-TRMs (A) down or (B) horizontally across the slope. HP-TRMs will unroll with appropriate side against the soil surface. All HP-TRMs must be securely fastened to soil surface by placing staples/stakes in appropriate locations as shown in the staple pattern guide.
4. The edges of parallel HP-TRMs must be stapled with approximately 2" - 5" (5-12.5cm) overlap depending on the HP-TRM type.
5. Consecutive HP-TRMs spliced down the slope must be end over end (Shingle style) with an approximate 3"(7.5cm) overlap. Staple through overlapped area, approximately 12"(30cm) apart across entire HP-TRM width.

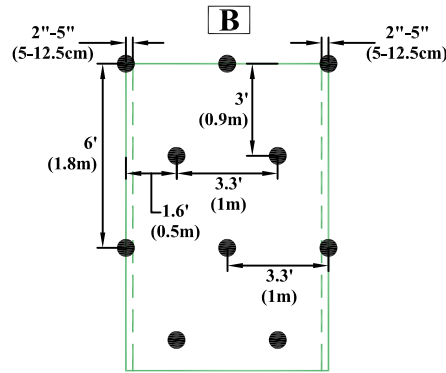
Drawing Not To Scale

*NOTE:
 In loose soil conditions, the use of staple or stake lengths greater than 6"(15cm) may be necessary to properly secure the HP-TRMs.

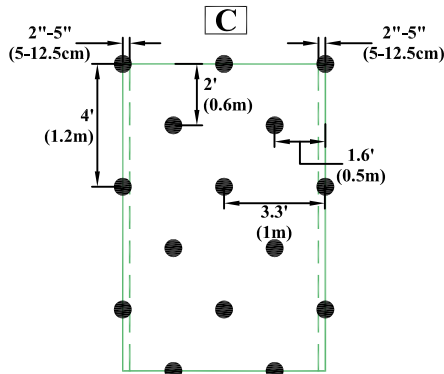
SLOPE INSTALLATION EARTH ANCHOR (EA) DETAIL



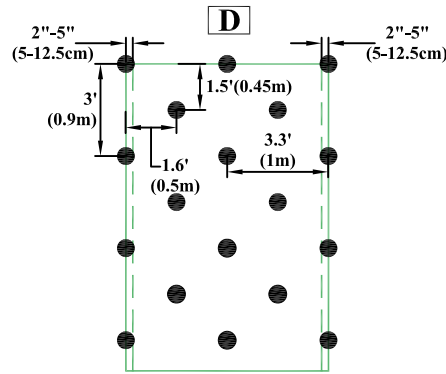
0.7 Anchors per SQ. YD.
(0.8 Anchors per SQ. M.)



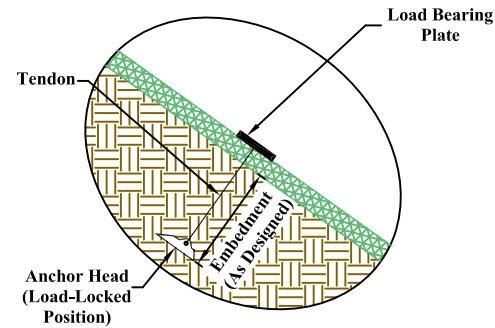
1.15 Anchors per SQ. YD.
(1.35 Anchors per SQ. M.)



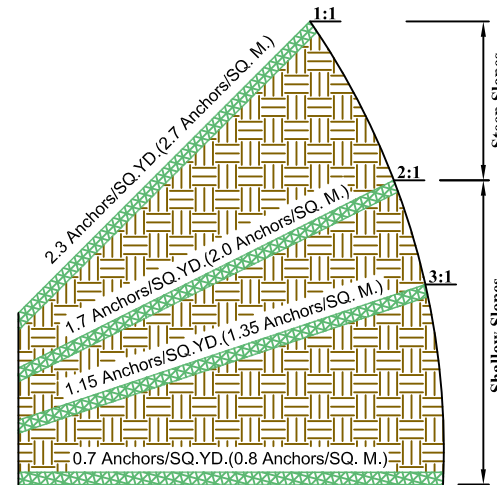
1.7 Anchors per SQ. YD.
(2.0 Anchors per SQ. M.)



2.3 Anchors per SQ. YD.
(2.7 Anchors per SQ. M.)



Earth Anchor
Detail



Channel & Shoreline
Slopes

NOTES:

- * The performance of ground anchoring devices is highly dependent on numerous site/project specific variables. It is the sole responsibility of the project engineer and/or contractor to select the appropriate anchor type and length. Anchoring shall be selected to hold the mat in intimate contact with the soil subgrade and resist pullout in accordance with the project's design intent.
- * Anchor Pattern Guide can vary based on earth anchor and blanket selection.
- * If desired, the system can be soil-filled and sodded after TRM installation. Sod should be stapled/staked according to plan specifications.

CRITICAL POINTS

- A. Overlaps and Seams
- B. Projected Water Line
- C. Channel Bottom/Side Slope Vertices



1. Prepare soil before installing high-performance turf reinforcement mats (HP-TRMs), including any necessary application of lime, fertilizer, and seed.
2. Begin at the top of the slope by anchoring the HP-TRMs in a 6" (15 cm) deep x 6" (15cm) wide trench with approximately 12" (30 cm) of HP-TRMs extended beyond the up-slope portion of the trench. Anchor the HP-TRMs with a row of staples and anchors approximately 12" (30 cm) apart in the bottom of the trench. Backfill and compact the trench after stapling. Apply seed to compacted soil and fold remaining 12" (30 cm) portion of HP-TRMs back over seed and compacted soil. Secure HP-TRMs over compacted soil with a row of staples/stakes spaced approximately 12" (30 cm) apart across the width of the HP-TRMs.
3. Roll the HP-TRMs (A) down or (B) horizontally across the slope. HP-TRMs will unroll with appropriate side against the soil surface. All HP-TRMs must be securely fastened to soil surface by placing staples/stakes in appropriate locations as shown in the staple pattern guide.
4. The edges of parallel HP-TRMs must be stapled with approximately 2" - 5" (5-12.5cm) overlap depending on the HP-TRM type.
5. Consecutive HP-TRMs spliced down the slope must be end over end (Shingle style) with an approximate 3"(7.5cm) overlap. Staple through overlapped area, approximately 12"(30cm) apart across entire HP-TRM width.

*NOTE:

In loose soil conditions, the use of staple or stake lengths greater than 6"(15cm) may be necessary to properly secure the HP-TRMs.

Drawing Not To Scale

Tensar.

**NORTH
AMERICAN
GREEN®**

Disclaimer:

The information presented herein is general design information only. For specific applications, consult an independent professional for further design guidance.

5401 St. Wendel - Cynthiana Rd.
Poseyville, IN 47633

PH: 800-722-2040
www.nagreen.com

Drawn on: 03-07-11