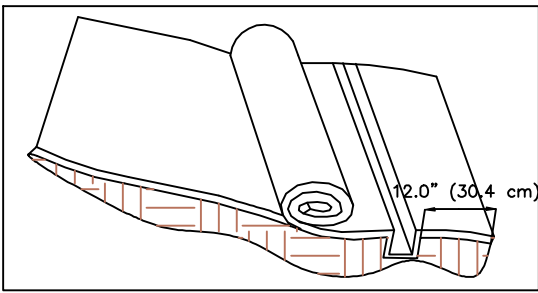


# SEDIMENTSTOP INSTALLATION



NORTH  
AMERICAN  
GREEN

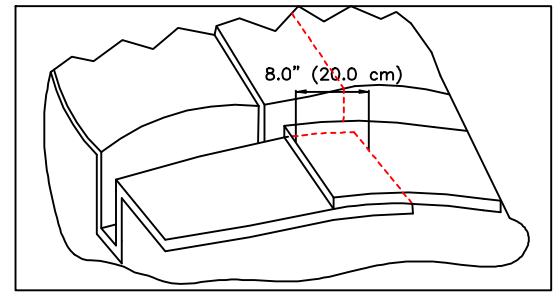
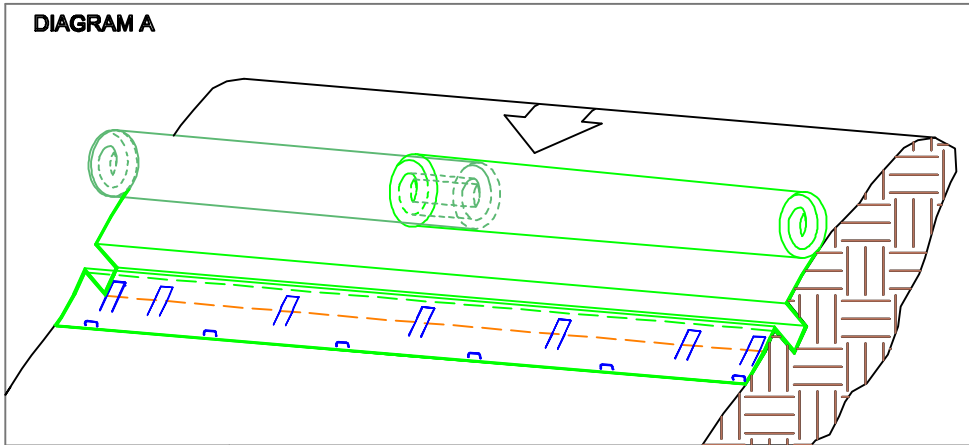
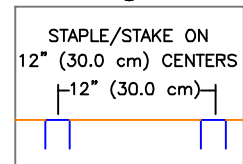


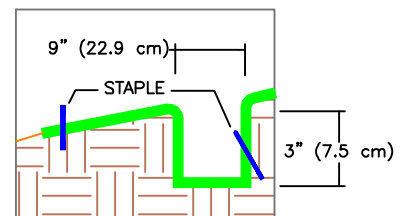
DIAGRAM A



③



①



⑦

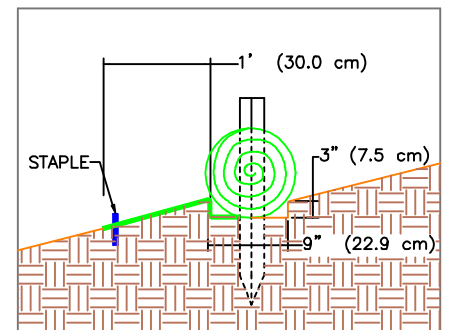
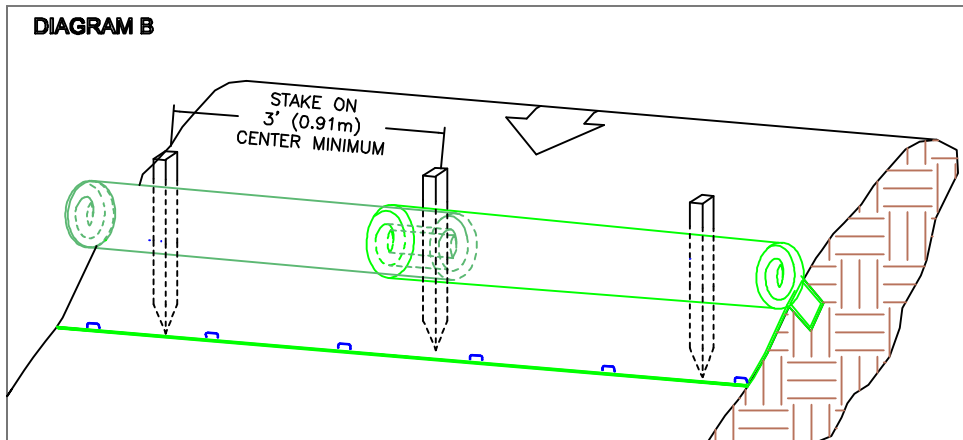


DIAGRAM B



1. BEGIN AT THE LOCATION WHERE THE SEDIMENTSTOP (Patent Pending) IS TO BE INSTALLED BY EXCAVATING A 3" (7.5 CM) DEEP X 9" (22.9 CM) WIDE TRENCH ALONG THE CONTOUR OF THE SLOPE. EXCAVATED SOIL SHOULD BE PLACED UP-SLOPE FROM THE ANCHOR TRENCH.
2. UNROLL THE SEDIMENTSTOP SO THE SECTION WITH THE 2' WIDE TOP NETTING IS THE DOWN SLOPE END (SPLASH APRON). THE SPLASH APRON OF THE SEDIMENTSTOP SHOULD COVER THE ANCHOR TRENCH ENSURING THAT APPROXIMATELY 12" (30 CM) IS EXTENDED BEYOND THE LOWER EDGE OF THE ANCHOR TRENCH. NOTE: SEEDING MUST BE CONDUCTED PRIOR TO INSTALLATION OF THE SEDIMENTSTOP.
3. SECURE THE SEDIMENTSTOP IN THE ANCHOR TRENCH BY PLACING A ROW OF STAPLES/STAKES ON 12" (30 CM) CENTERS ACROSS THE ENTIRE LENGTH OF THE SEDIMENTSTOP. A SECOND ROW OF STAPLES/STAKES MUST BE PLACED ACROSS THE ENTIRE LOWER EDGE OF THE SEDIMENTSTOP SPLASH APRON ON APPROXIMATELY 12" (30 CM) CENTERS, STAGGERED WITH THE FIRST ROW OF STAPLES/STAKES.
4. BEGIN ROLLING THE SEDIMENTSTOP FROM ITS UPPER EDGE (UP-SLOPE EDGE) INTO A CONSISTENT ROLL DIAMETER UNTIL THE ROLL IS LOCATED IN THE ANCHOR TRENCH. IF A LARGER DIAMETER STRUCTURE IS DESIRED, PLACE ADDITIONAL ORGANIC MATERIAL (I.E. STRAW, LEAVES, PINE NEEDLES OR LAWN CLIPPINGS) ACROSS THE ENTIRE WIDTH OF THE SEDIMENTSTOP PRIOR TO ROLLING. SEE DIAGRAM 4a FOR SEAMING OF ADJACENT SEDIMENTSTOP ROLLS.
5. STOP ROLLING THE SEDIMENTSTOP WHEN THE ROLL IS LOCATED IN THE ANCHOR TRENCH.
6. SECURE THE SEDIMENTSTOP STRUCTURE TO THE SLOPE SURFACE BY DRIVING APPROXIMATELY 18" - 24" (45-60 CM) STAKES THROUGH THE CENTER OF THE ROLL EVERY 3' (0.9 M) ON CENTER. IF TWO SEDIMENTSTOP STRUCTURES ARE SEAMED TOGETHER ENSURE A STAKE IS DRIVEN THROUGH THE SEAM. THE FINAL STRUCTURE'S DIAMETER WILL DICTATE STAKE LENGTH. LEAVE A SUFFICIENT AMOUNT OF STAKE EXPOSED ABOVE THE SEDIMENTSTOP TO ENSURE THE STRUCTURE IS NOT COMPRESSED. BOTH LONGITUDINAL ENDS SHOULD BE ANGLED UP SLOPE.
7. BACKFILL AND COMPACT SOIL INTO THE UP-SLOPE PORTION OF THE ANCHOR TRENCH. SMOOTH AND LEVEL ANY SOIL REMAINING ABOVE THE SEDIMENTSTOP NOT USED TO FILL THE ANCHOR TRENCH. PLACE SEED ALONG UP-SLOPE PORTION OF SEDIMENTSTOP IF REQUIRED.



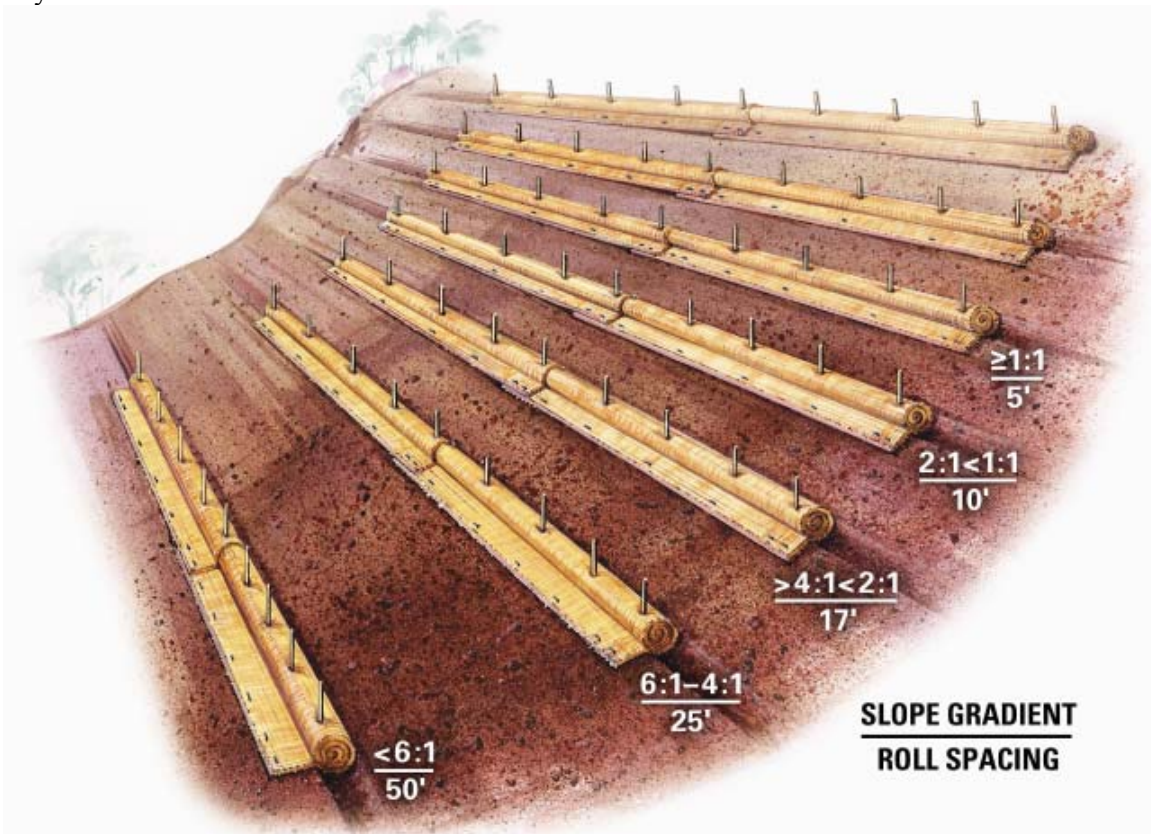
# SedimentSTOP™

BIODEGRADABLE Filtration System

## APPLICATION GUIDELINES

North American Green SedimentSTOP™ is a 100% biodegradable best management practice (BMP) that offers an effective and economical alternative to silt fence, straw bales, and wattles for sediment control and storm water runoff. The SedimentSTOP's combination of straw/coconut fibers and leno woven jute netting has been proven in university and field research to afford exceptional sediment control by slowing and filtering runoff and trapping sediment. The research showed that properly installed, the SedimentSTOP structure reduced initial sediment migration by up to 98% compared to unprotected control plots.

The following guidelines are provided to assist in design, installation, and structure spacing. These guidelines may require modification due to variation in soil type, rainfall intensity or duration, and amount of runoff affecting the application site. SedimentSTOP should be installed perpendicular to the primary direction of overland flow.



To maximize sediment containment with the SedimentSTOP place the initial structure at the top/crest of the slope if significant runoff is expected from above. If no runoff from above is expected, the initial SedimentSTOP can be installed at the appropriate distance downhill from the top/crest of the slope. The final structure should be installed at or just beyond the bottom/toe of the slope.

The SedimentSTOP is a temporary sediment control device and is not intended to replace erosion control blankets or turf reinforcement mats. If vegetation is desired for permanent erosion control, North American Green recommends that rolled erosion control products be used to provide effective immediate erosion control until vegetation is established. The SedimentSTOP may be used in conjunction with blankets and mats as supplemental sediment and runoff control for these applications. Like all sediment control devices, the effectiveness of SedimentSTOP is dependent on storage capacity.